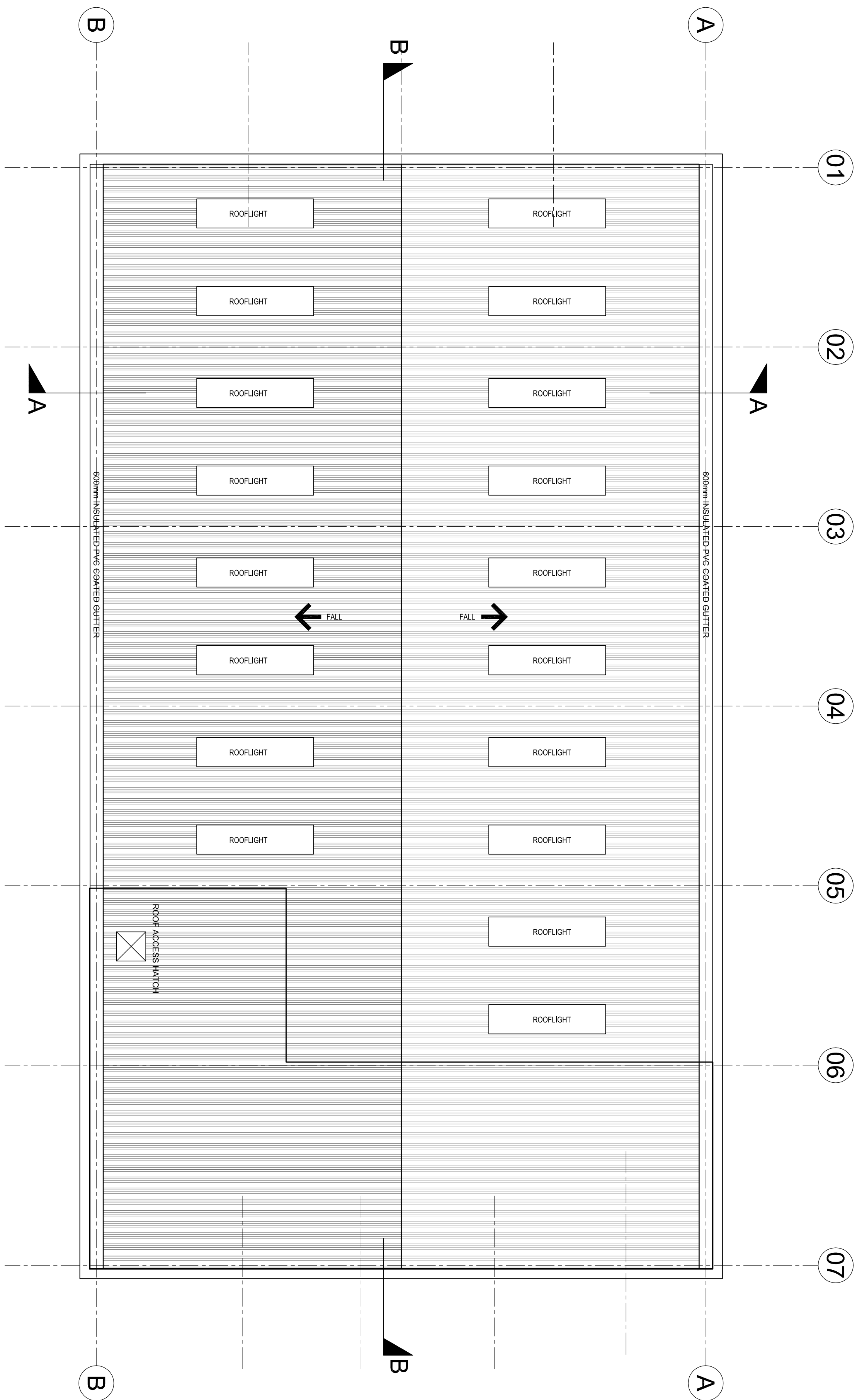


UNIT E9 Roof Plan 1:100

[illegible]

	Revisions
A	12.12.04 ZS Unit 4 FOOTPRINT MIRRORED
B	16.06.07 MS RHJ has retained the units as follows: Unit 2 becomes EG, 3 becomes EG, 4 becomes EG, 5 becomes EG, 6 becomes EG
C	
D	
E	
F	
G	
H	
I	
J	
K	
L	
M	



ROOF - PITCH 6° WITH A KINGSPAN KS1000RV 40mm
MIN. OR EQUAL APPROVED PLASTISOL FINISHED
COMPOSITE ROOF PANEL (PCB AND FM APPROVED
GRADE B WITH PIR INSULATION) INSULATION
THICKNESS SUBJECT TO HEAT LOSS CALCULATIONS
BY CLADDING SUPPLIER

AUTOMATIC SMOKE VENTS AND OR ROOF ACCESS HATCH TO BE FULLY AUTOMATED AND HAVE MANUAL OVERRIDE TO ALLOW FOR ACCESS TO ROOF. HATCH BY COLT OR SIMILAR APPROVED.

ROOFING SYSTEM TO BE SUPPORTED ON GALVANISED METAL PURLINS ON UB STEEL PORTAL FRAME IN ACCORDANCE WITH STRUCTURAL ENGINEERS DETAILS

150MM DIAMETER RAINWATER DOWN PIPES WITH
RODDING ACCESS AT LOW LEVEL AND BALLOON
GUARD TO ALL RWP OUTLETS.

ROOF LIGHTS @ 10% OF TOTAL FLOOR AREA. DOUBLE GLAZED TRANSLUCENT SAFETY SHEETING TO MATCH PROFILE OF ROOFING PANEL.

DOUBLE SKIN INSULATED GUTTER FORMED USING 1.7MM GALVANIZED METAL, 1.2M GIRTH BENT TO REQUIRED PROFILE HAVING A MIN 150 UPSTAND, 40MM RIGID INSULATION BONDED TO BASE SHEET WITH TROCOL / PVC FILM (350 MICRONS THICK) BONDED TO STEEL SUBSTRATE AND BENT TO REQUIRED PROFILE.

