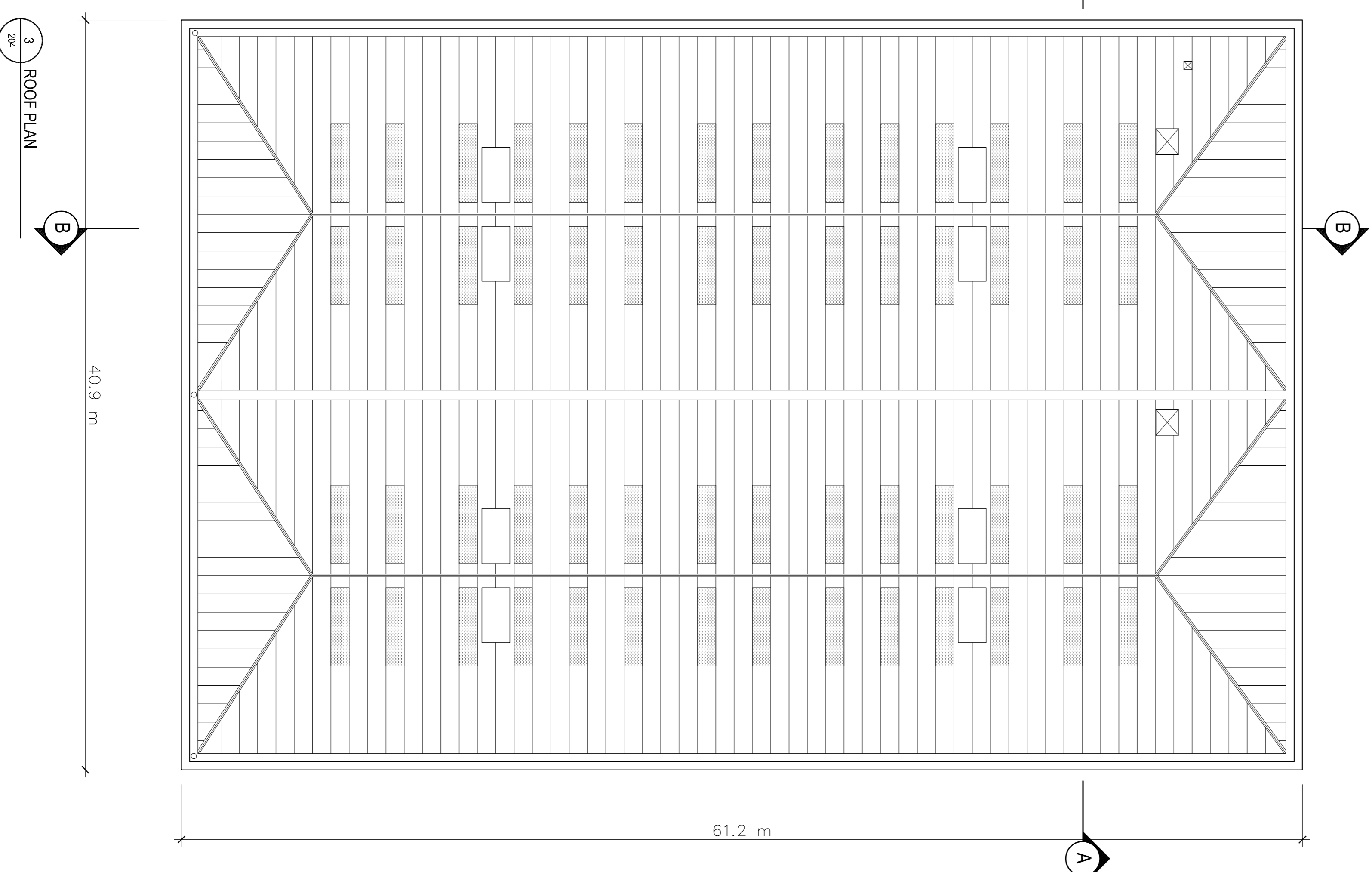
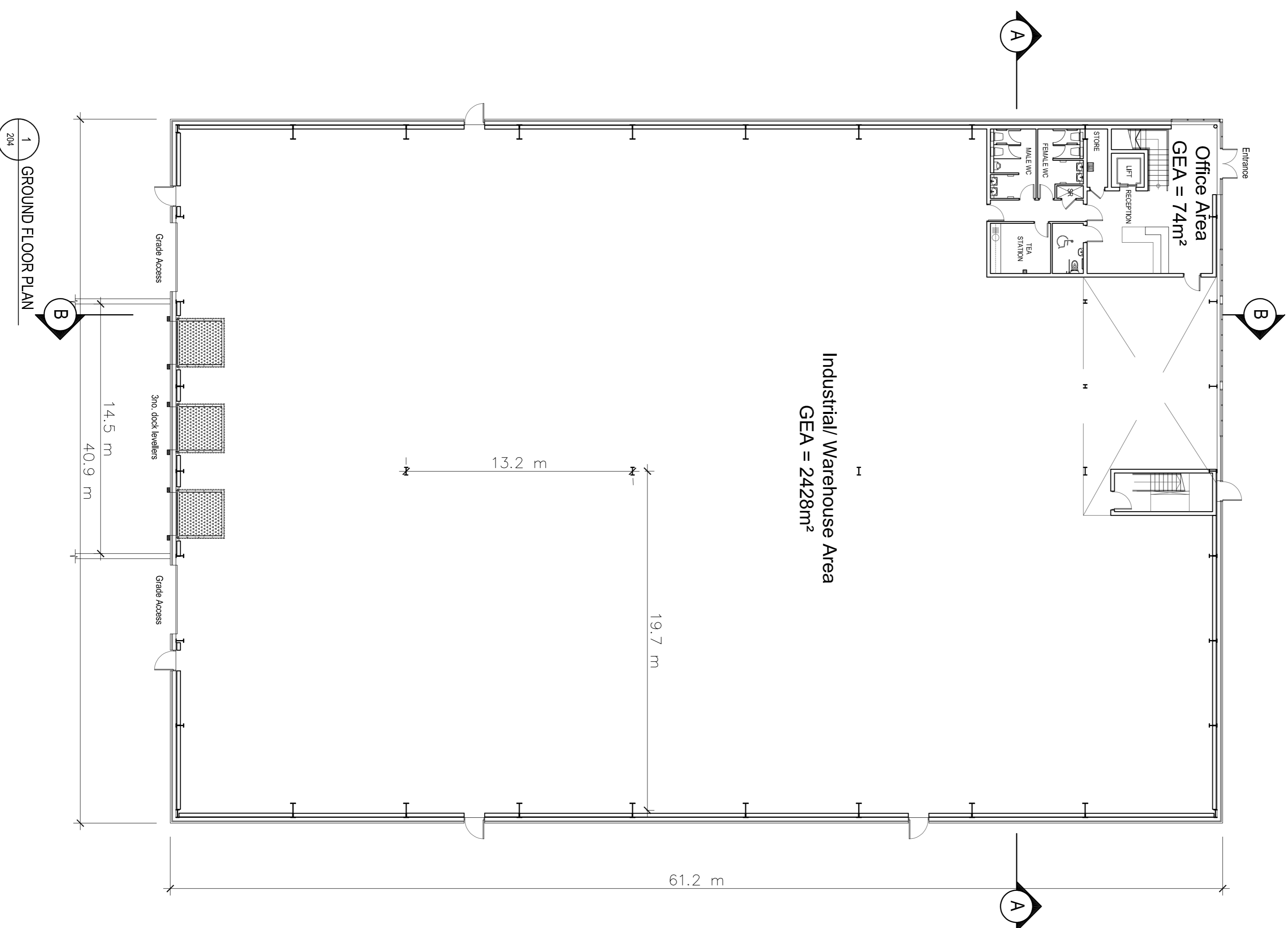
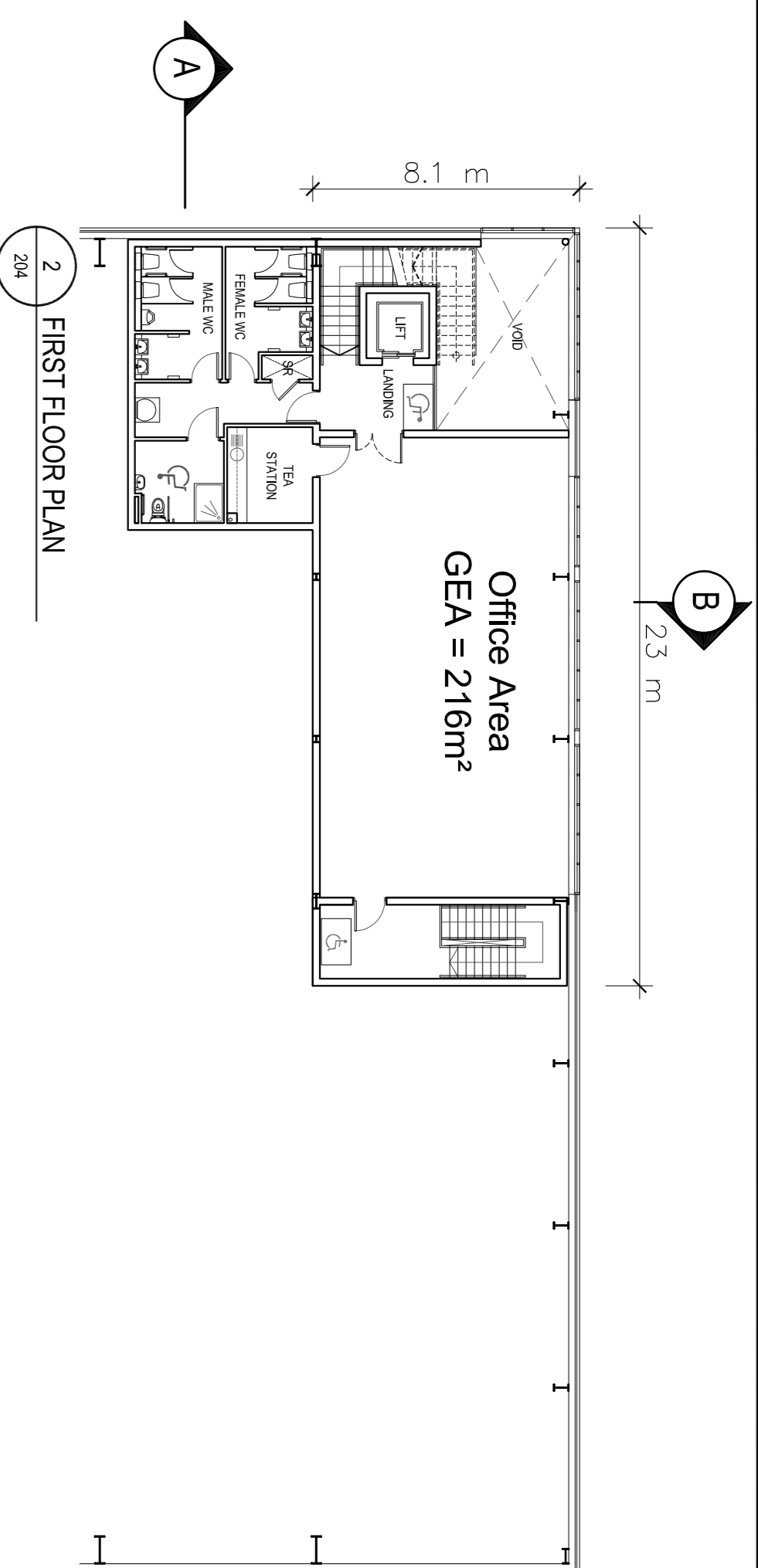


Schedule of Approximate Gross External Floor Areas (GEA)	
Warehouse	2428
Office (Ground)	74
Office (First)	216
Total	2718 sq.m (GEA)



DUBLIN AIRPORT LOGISTICS PARK - CONDOR HOUSE - PLANS

DEVELOPED BY:



Rohan Holdings Limited
 4th Floor, Block 2, Harcourt Centre,
 Harcourt Street, Dublin 2.
 T:(01) 662 4455 E:info@rohanholdings.ie
 W:www.rohanholdings.ie

AGENT:
Savills Dublin Commercial
 33 Molesworth Street
 Dublin 2
 T: +353 (0) 1 618 1300
 E: industrial234@savills.ie
 W: www.savills.ie



PROJECT:
ROHAN HOLDINGS
DUBLIN AIRPORT LOGISTICS PARK

STAGE:
MARKETING

DRAWING TITLE:
CONDOR HOUSE
FLOOR & ROOF PLANS

DATE: JANUARY 2016 **DRAWING NO:** P-204
SCALE: 1:200
DRAWN: NW
CHECKED: OS
JOB NO.: 1574 **SHEET SIZE:** RENSISON
FILE NAME: A1L *