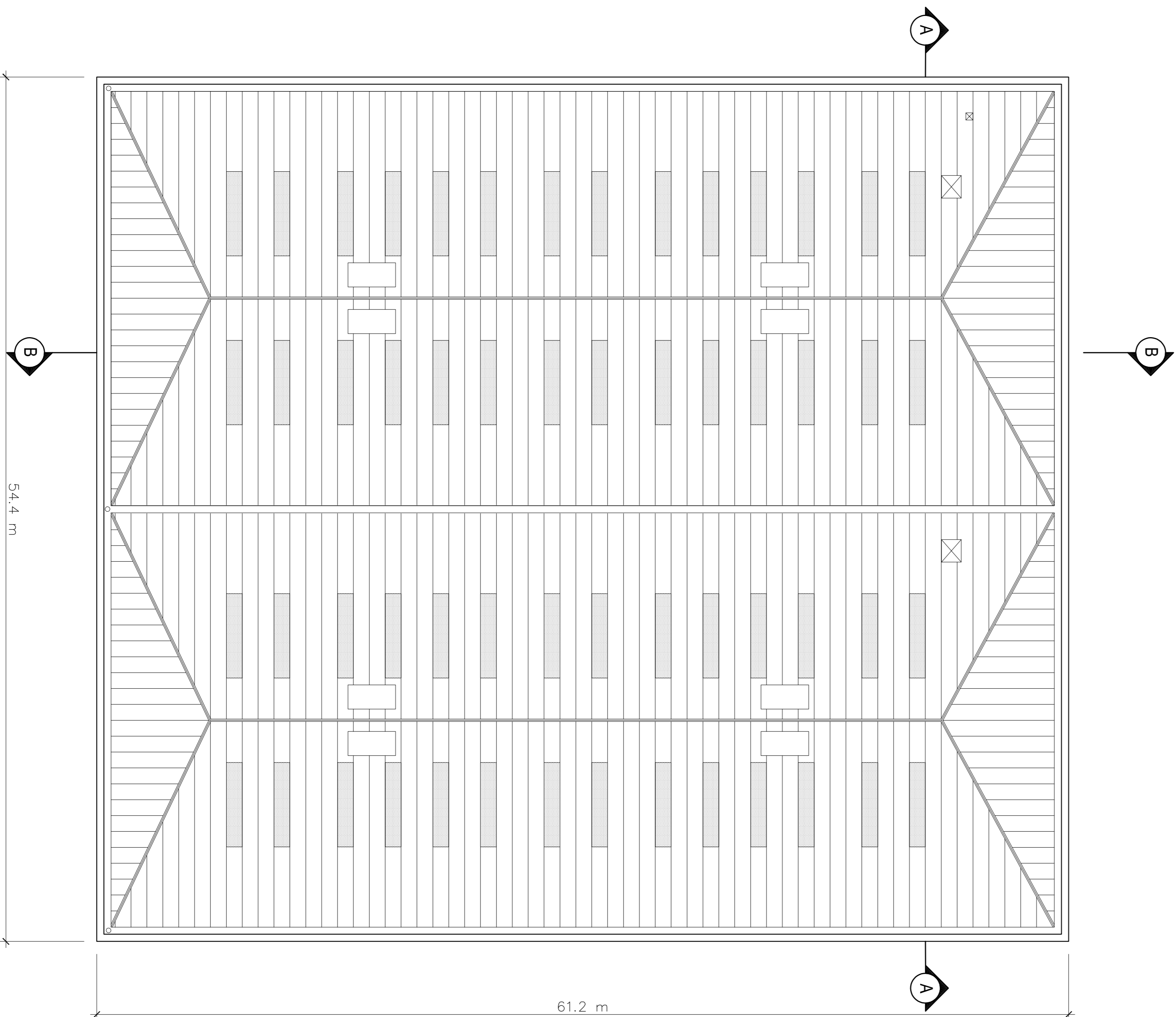
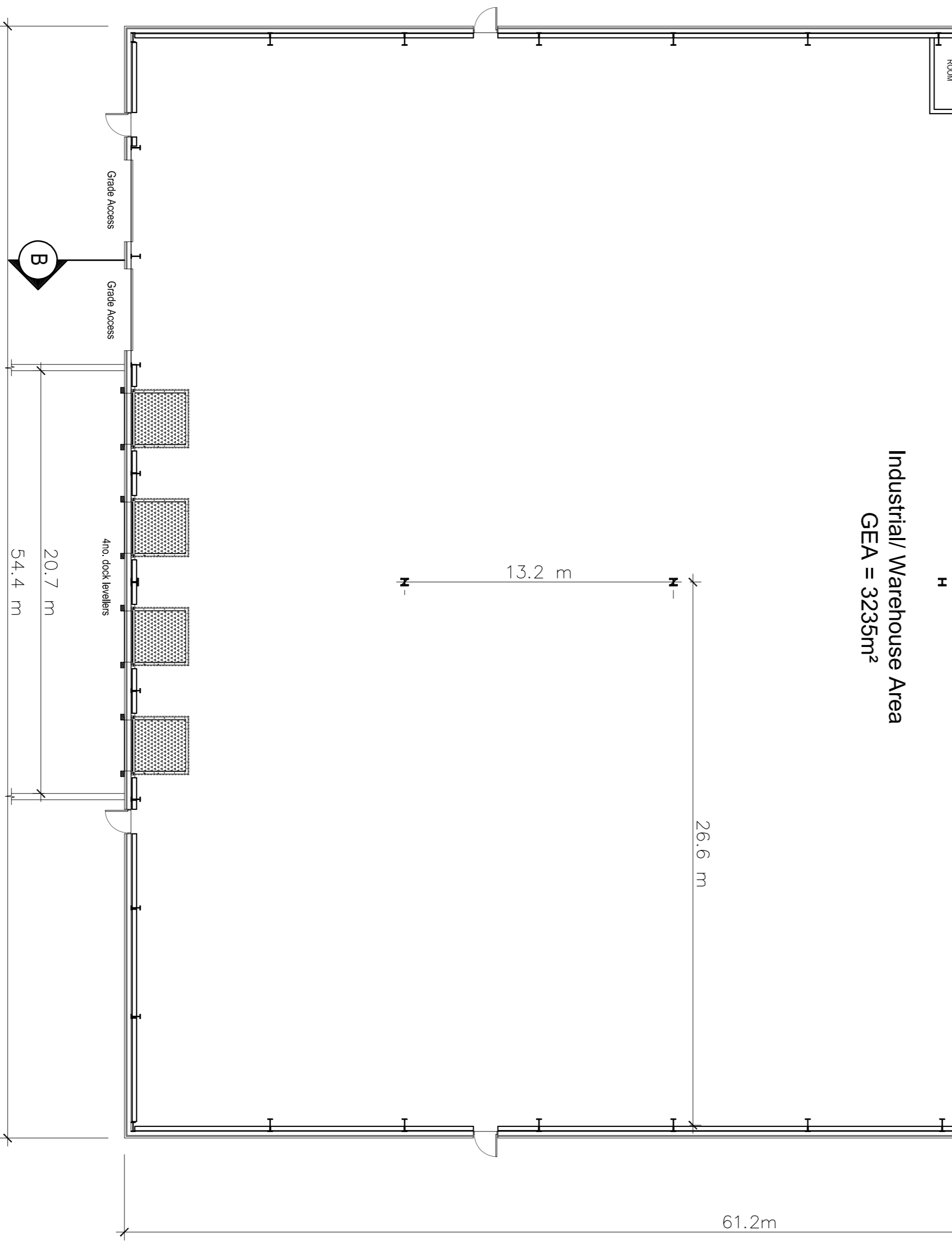
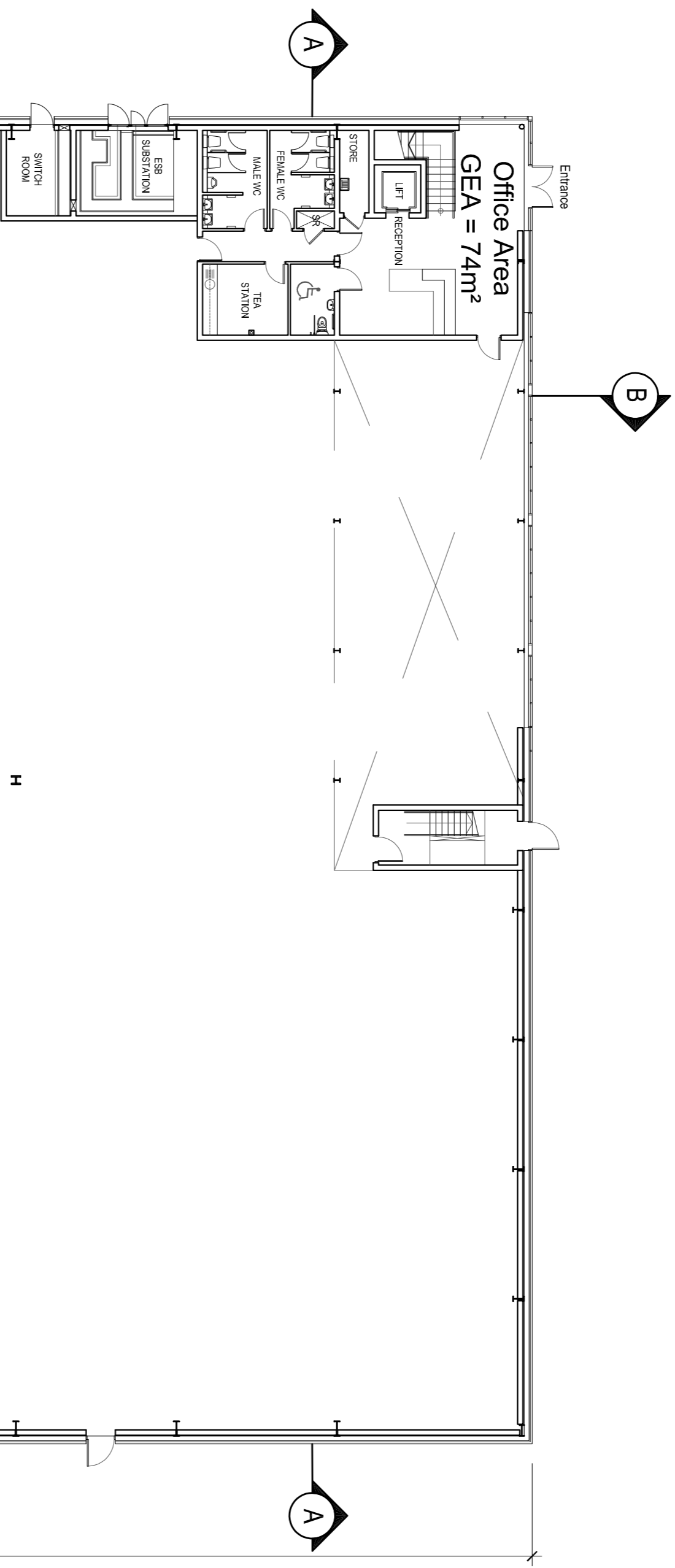
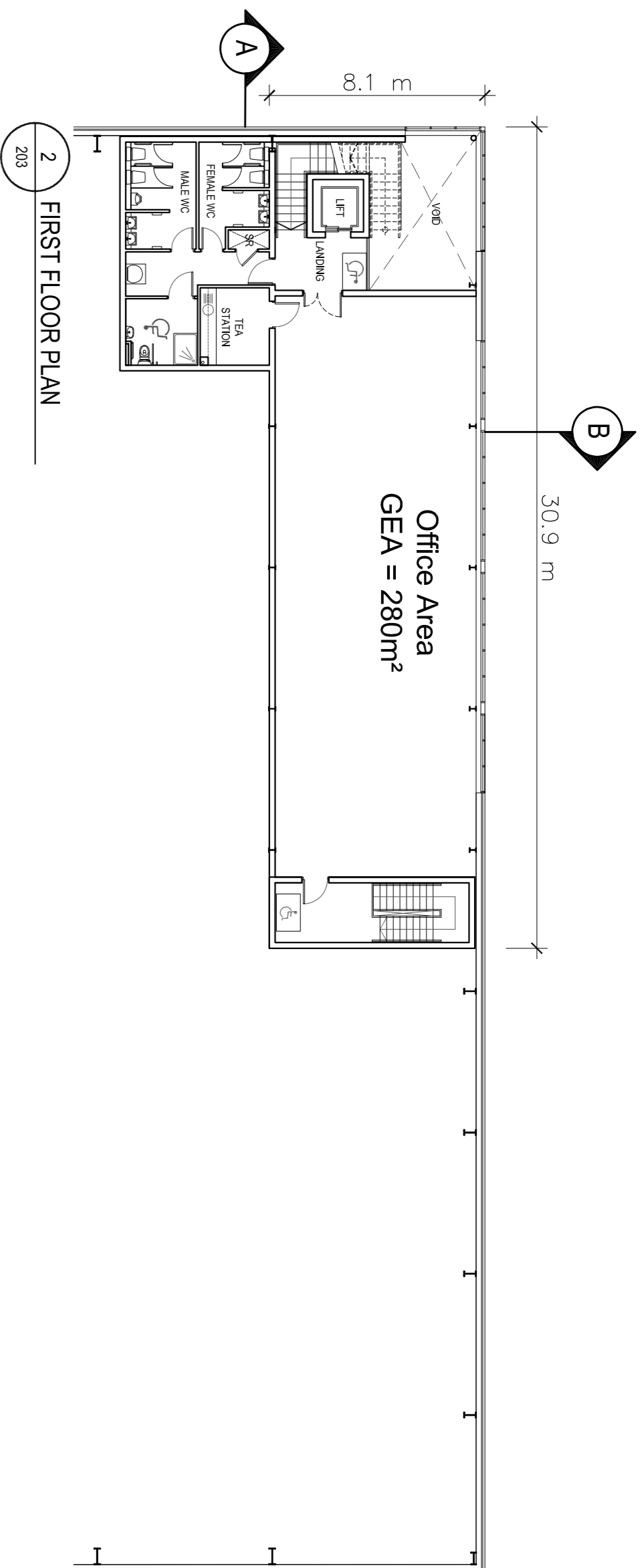


Schedule of Approximate Gross External Floor Areas (GEA)	
Warehouse	3235
Office (Ground)	74
Office (First)	280
<b>Total</b>	<b>3589 sq.m (GEA)</b>



DUBLIN AIRPORT LOGISTICS PARK - FINCH HOUSE - PLANS

DEVELOPED BY:



**Rohan Holdings Limited**  
 4th Floor, Block 2, Harcourt Centre,  
 Harcourt Street, Dublin 2.  
 T: (01) 662 4455 E: info@rohanholdings.ie  
 W: www.rohanholdings.ie

AGENT:

**Savills Dublin Commercial**  
 33 Molesworth Street  
 Dublin 2  
 T: +353 (0) 1 618 1300  
 E: industrial234@savills.ie  
 W: www.savills.ie



46 Upper Mount Street 1 +353 1 202 7000 www.totpa.ie  
 Dublin 2, Ireland +353 866005070 info@totpa.ie

PROJECT:

**ROHAN HOLDINGS  
 DUBLIN AIRPORT LOGISTICS PARK**

STAGE:

**MARKETING**

DRAWING TITLE:

**FINCH HOUSE  
 FLOOR & ROOF PLANS**

DATE:

JANUARY 2016

SCALE:

1:200

DRAWING NO:

P-203

CHECKED BY:

OS

SHEET SIZE:

REVISION

FILE NAME:

A1L \*