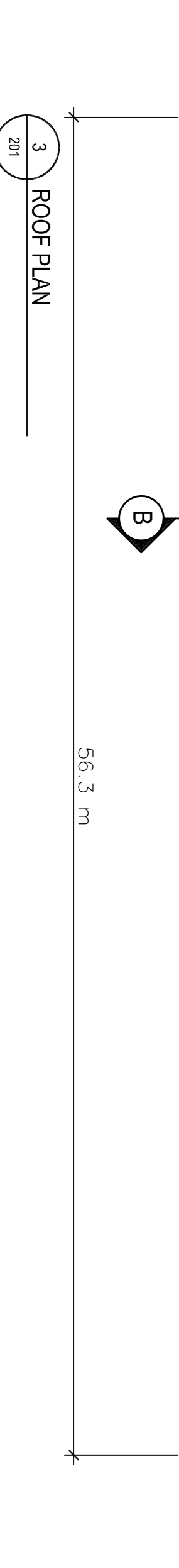
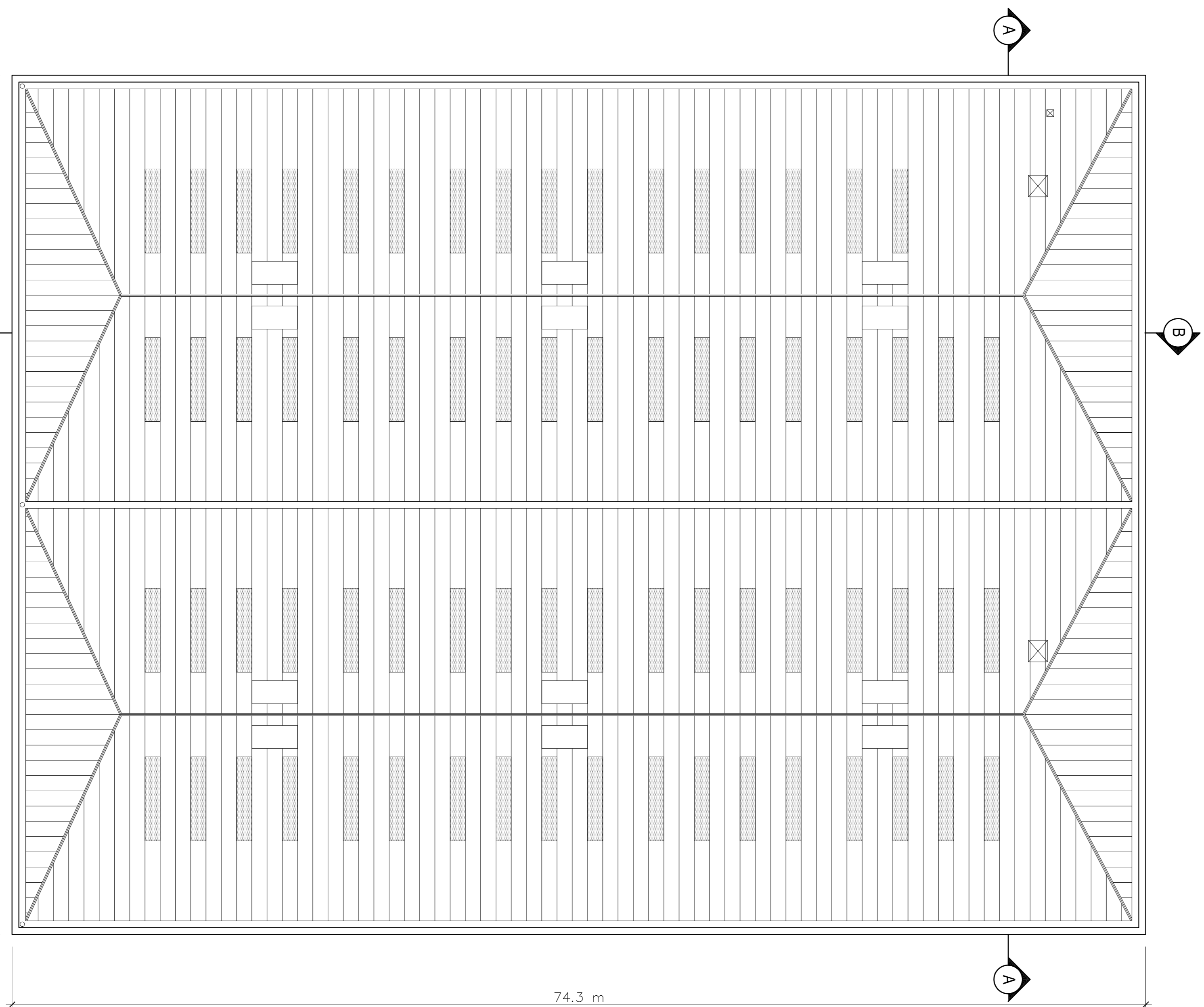
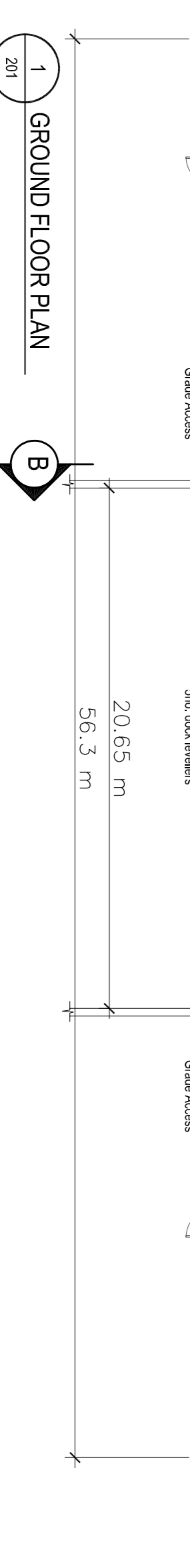
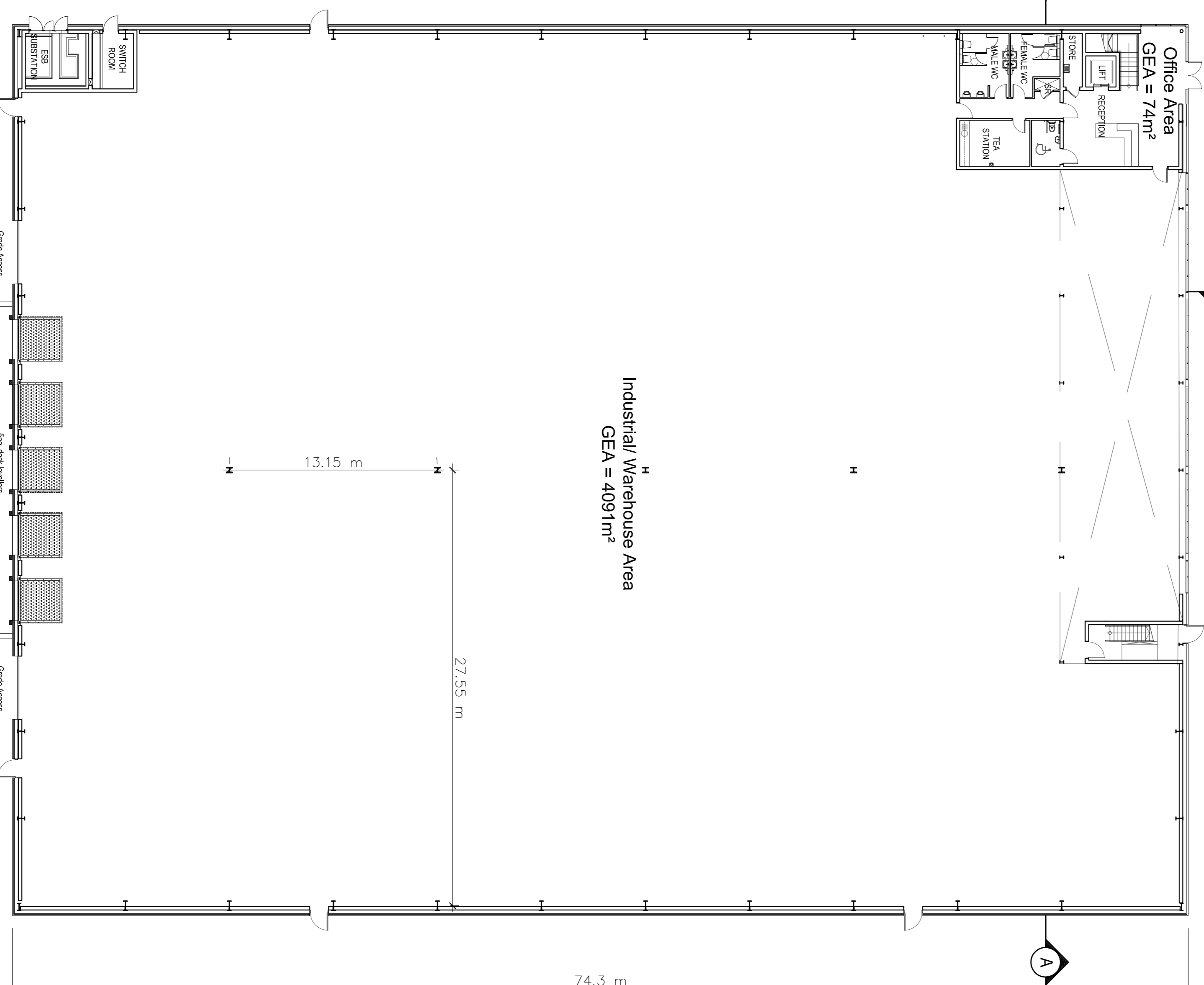
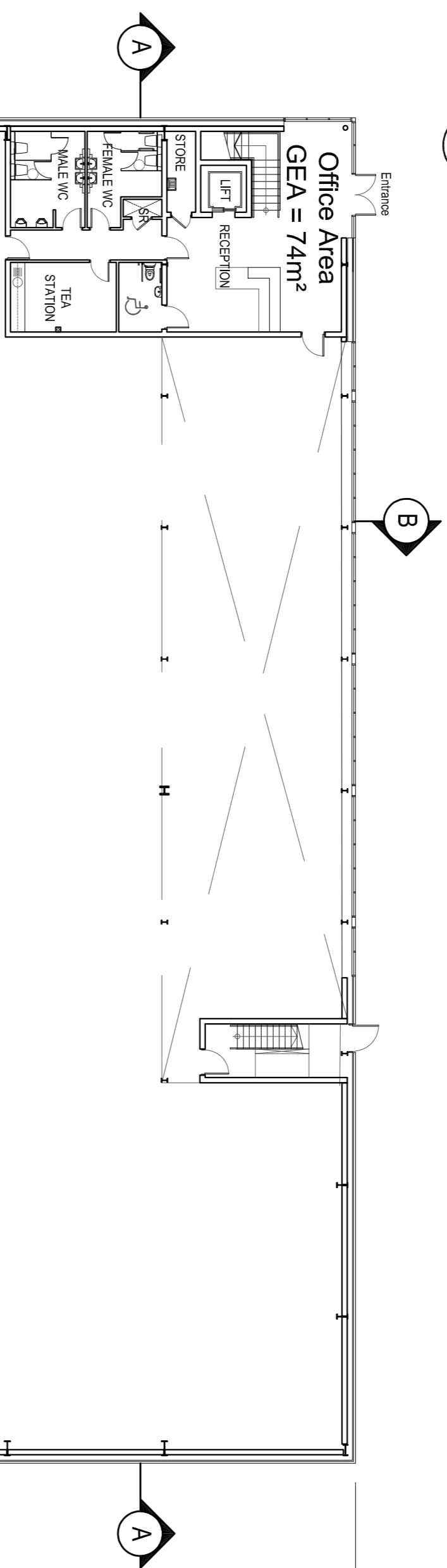
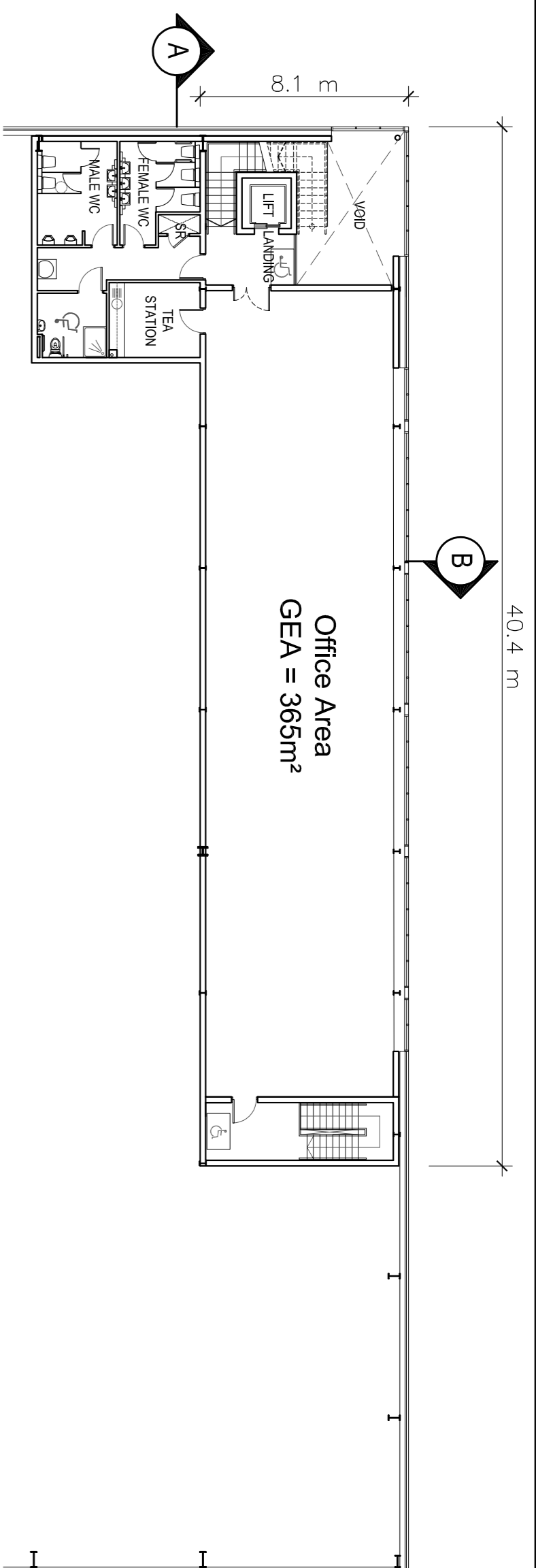


Schedule of Approximate Gross External Floor Areas (GEA)	
Warehouse	4091
Office (Ground)	74
Office (First)	365
Total	4530 sq.m (GEA)



DUBLIN AIRPORT LOGISTICS PARK - HERON HOUSE - PLANS

DEVELOPED BY:
ROHAN
 Rohan Holdings Limited
 4th Floor, Block 2, Harcourt Centre,
 Harcourt Street, Dublin 2.
 T: (01) 662 4455 E: info@rohanholdings.ie
 W: www.rohanholdings.ie

AGENT:
Savills
 Savills Dublin Commercial
 33 Molesworth Street
 Dublin 2
 T: +353 (0) 1 618 1300
 E: industrial234@savills.ie
 W: www.savills.ie

TOTP Architects
 The OTTOLIE Partnership

PROJECT:
 ROHAN HOLDINGS
 DUBLIN AIRPORT LOGISTICS PARK

STAGE:
 MARKETING

DRAWING TITLE:
 HERON HOUSE
 FLOOR & ROOF PLANS

DATE: JANUARY 2016 **DRAWING NO:** P-201
SCALE: 1:200
DRAWN: NW
CHECKED: OS
JOB NO.: 1574 **SHEET SIZE:** RENISON
FILE NAME: A1L *

40 Upper Mount Street 1 +353 1 202 7000 www.totpartnership.com
 Dublin 2, Ireland +353 86605570 info@totpartnership.com