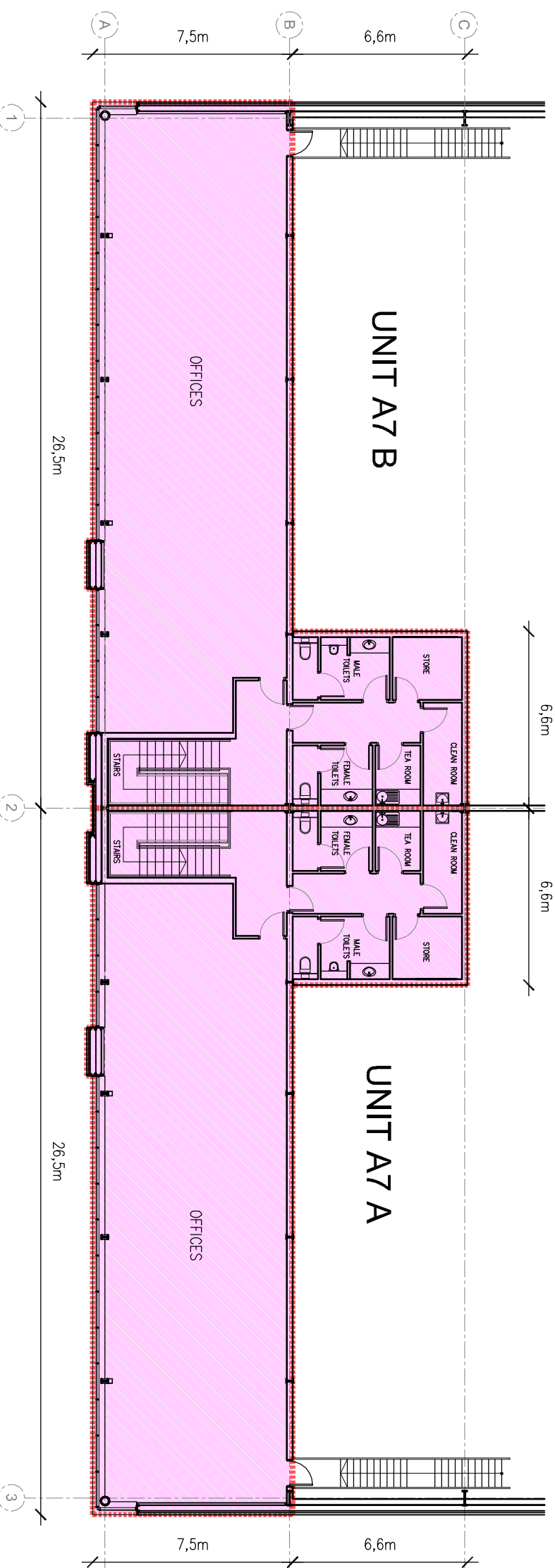
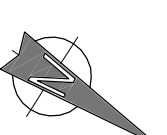
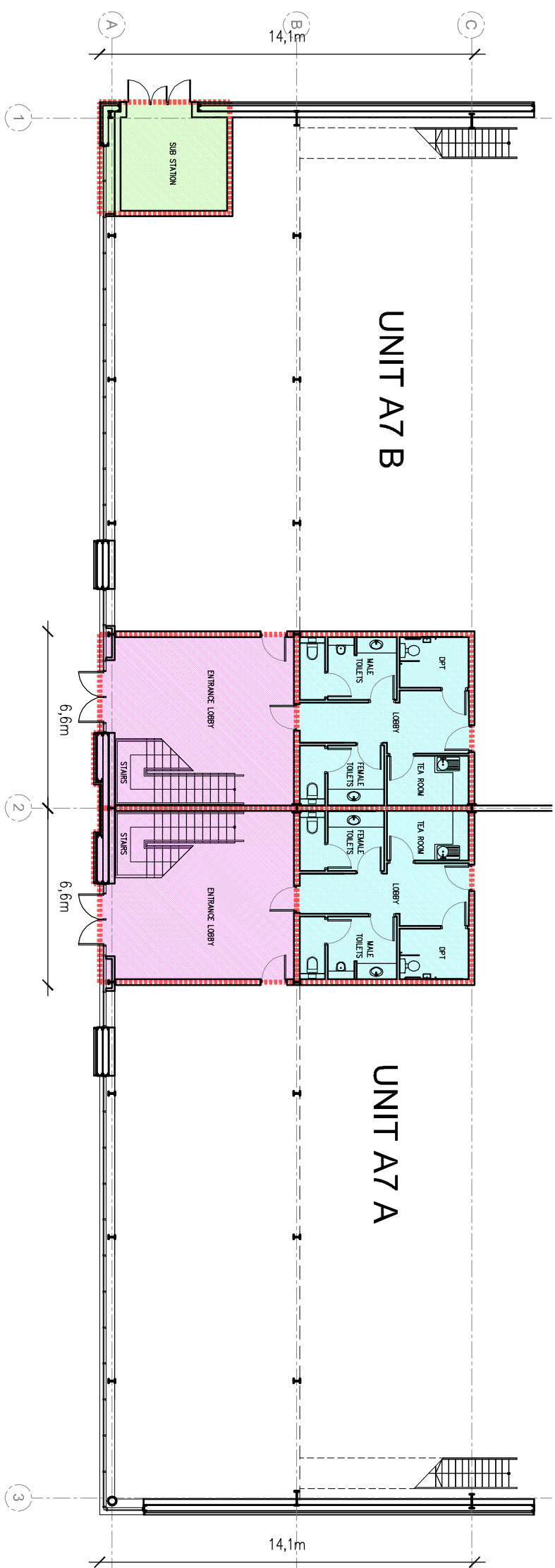


NOTES:  
DO NOT SCALE  
DIMENSIONS ARE APPROXIMATE  
FOR INFORMATION PURPOSES ONLY  
SUBJECT TO CONTRACT/CONTRACT DENIED



FIRST FLOOR



GROUND FLOOR

- UNIT A7a - Gross Ext Area**
- WAREHOUSE TOILETS  
42.5 m<sup>2</sup>
  - OFFICE CORE  
48.5 m<sup>2</sup>
  - OFFICES - FIRST FLOOR  
243 m<sup>2</sup>
  - ESB SUB-STATION  
20.5 m<sup>2</sup>

- UNIT A7b - Gross Ext Area**
- WAREHOUSE TOILETS  
42.5 m<sup>2</sup>
  - OFFICE CORE  
48.5 m<sup>2</sup>
  - OFFICES - FIRST FLOOR  
243 m<sup>2</sup>

The Developer reserves the right to alter plans, specifications & layout.  
No allowance is made for the accuracy of the copying process.



**DEVELOPER:** Rohan Holdings Limited  
4th Floor, Block 2, Harcourt Centre, Harcourt Street, Dublin 2.  
Tel +353 (0)1 662 4455 Fax +353 (0)1 676 5404  
Email: [info@rohanholdings.ie](mailto:info@rohanholdings.ie)  
[www.rohanholdings.ie](http://www.rohanholdings.ie)

**AGENT:** Savills Commercial Ireland  
33 Molesworth Street, Dublin 2.  
Phone : +353 (0) 1 618 1300  
Email: [info@savills.ie](mailto:info@savills.ie)  
[www.savills.ie](http://www.savills.ie)

**ARCHITECTS:** JSA Architects  
10 Booterstown Avenue, Blackrock, Co. Dublin.  
Phone: Phone :+353 (0) 1 288 2661  
Email: [jse@jsarch.ie](mailto:jse@jsarch.ie)  
[www.jsarch.ie](http://www.jsarch.ie)

North City Business Park - Units A7a & A7b - OFFICE PLANS