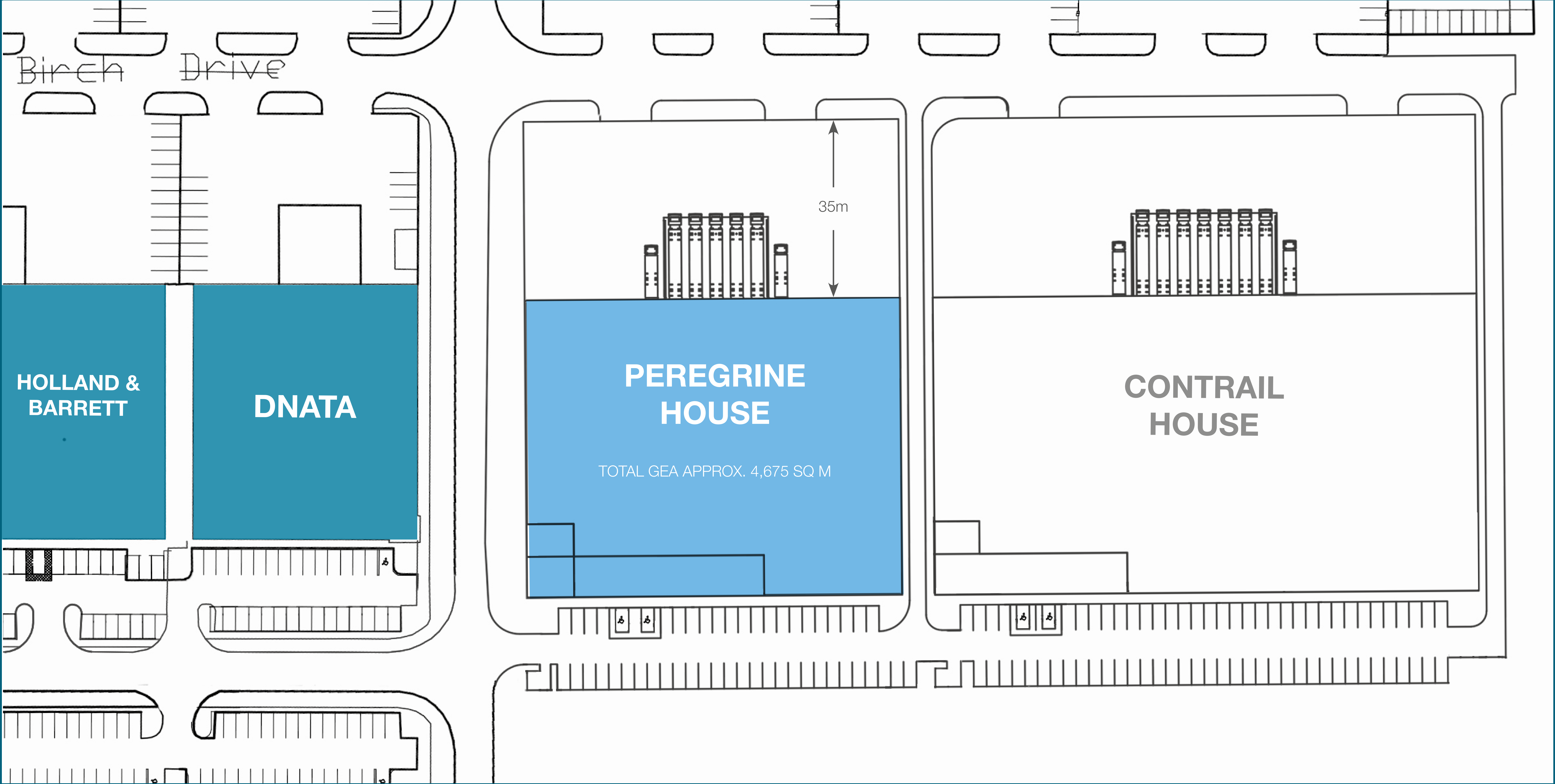


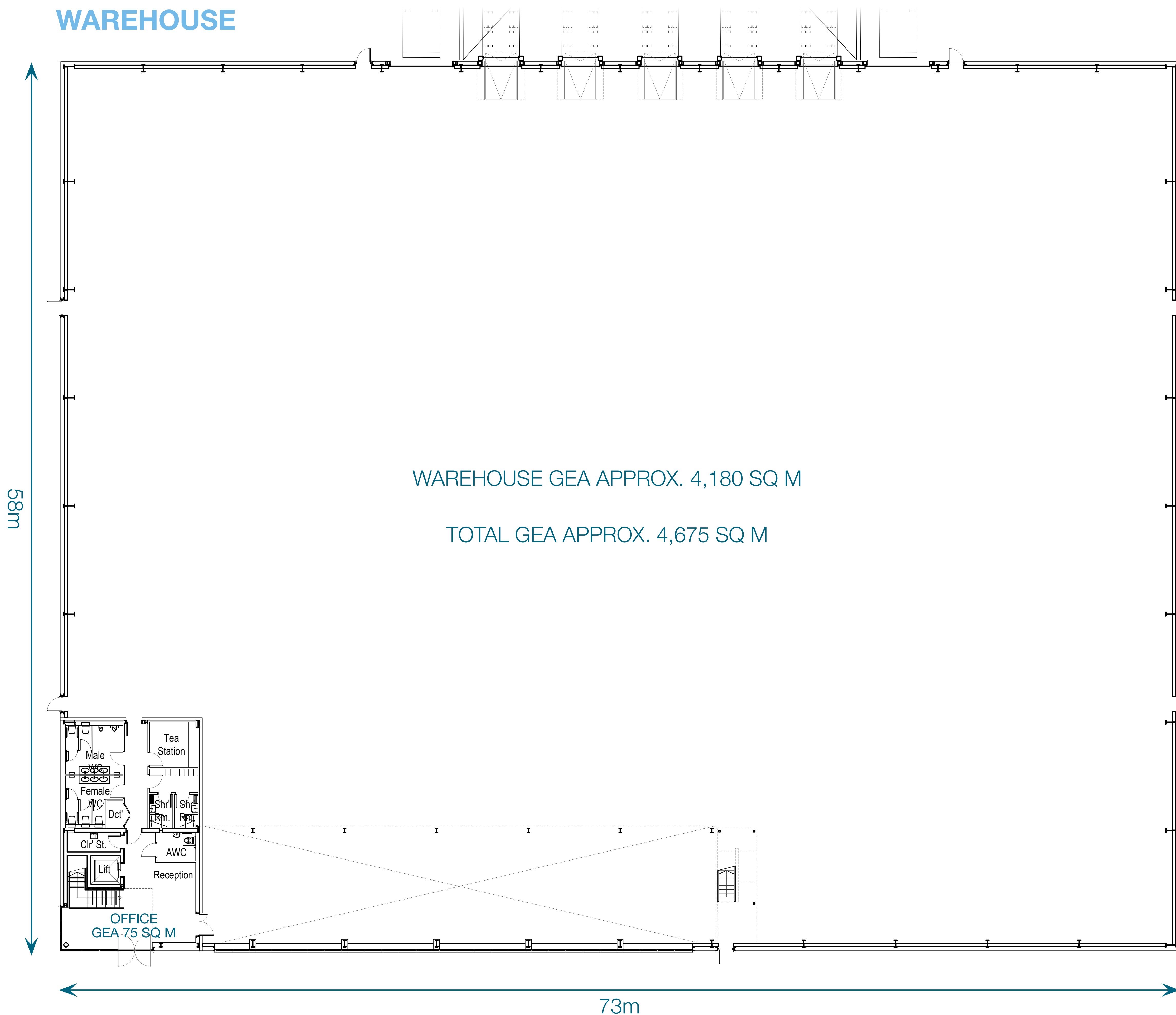
PEREGRINE HOUSE



NOT TO SCALE – FOR IDENTIFICATION PURPOSES ONLY



PEREGRINE HOUSE



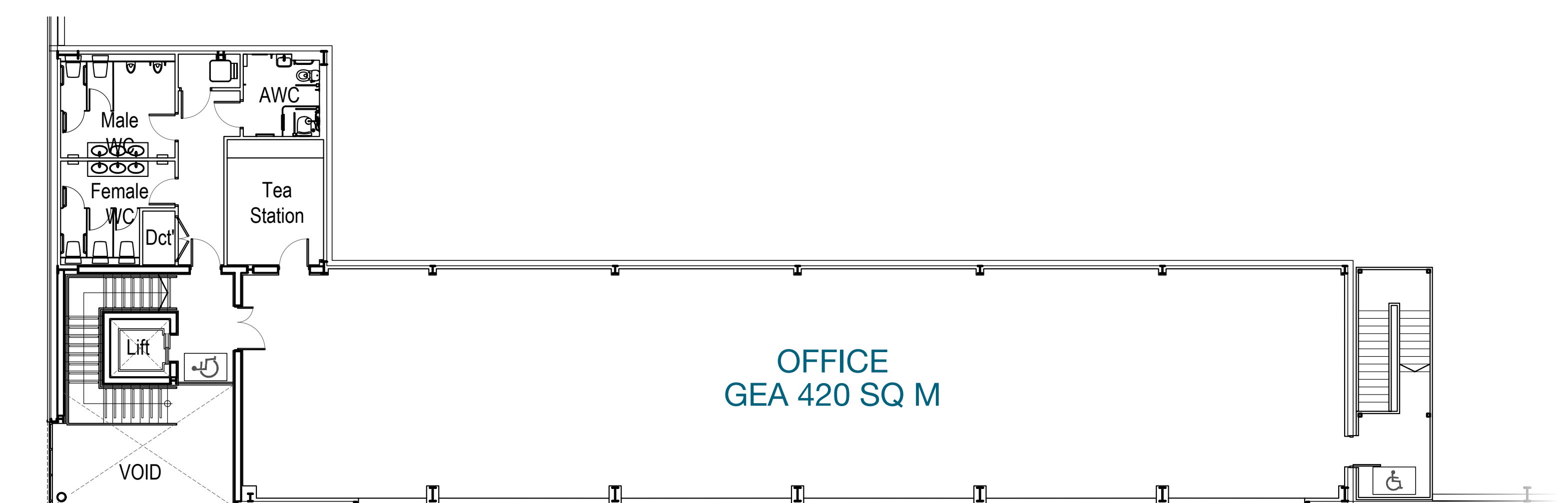
ACCOMMODATION

APPROXIMATE GROSS EXTERNAL FLOOR AREAS

| Peregrine House | Sq M | Sq Ft |
|-----------------|--------------|---------------|
| Warehouse | 4,180 | 44,995 |
| Offices | 495 | 5,324 |
| Total | 4,675 | 50,319 |

Site area of approx. 1.06 Hectares (2.6 acres)

OFFICES (FIRST FLOOR)

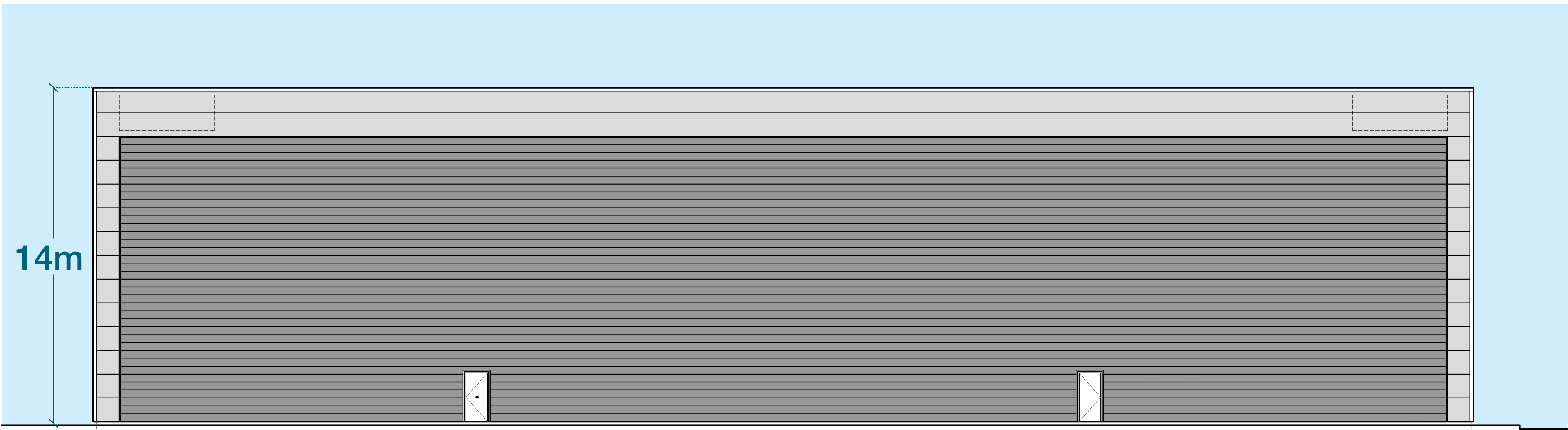


NOT TO SCALE – FOR IDENTIFICATION PURPOSES ONLY

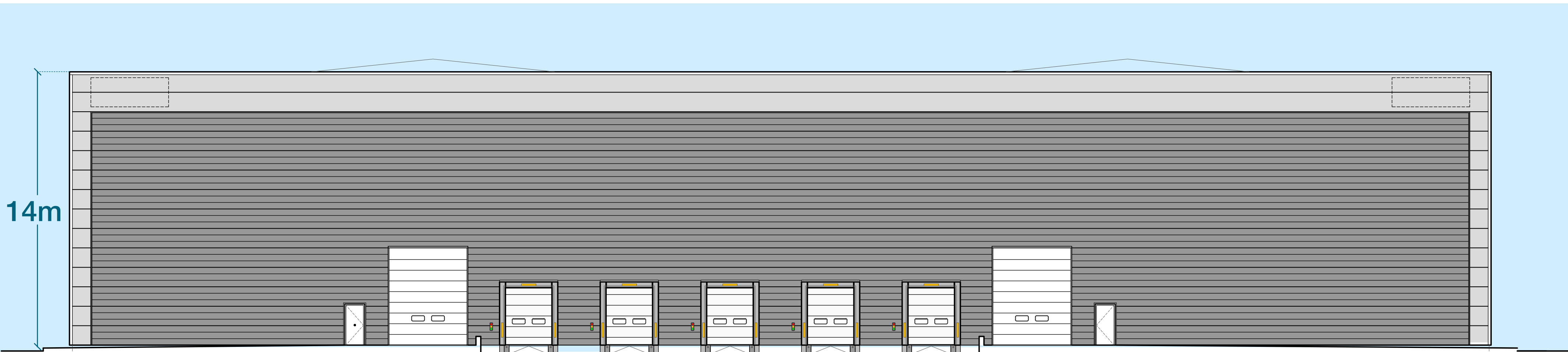


A development by

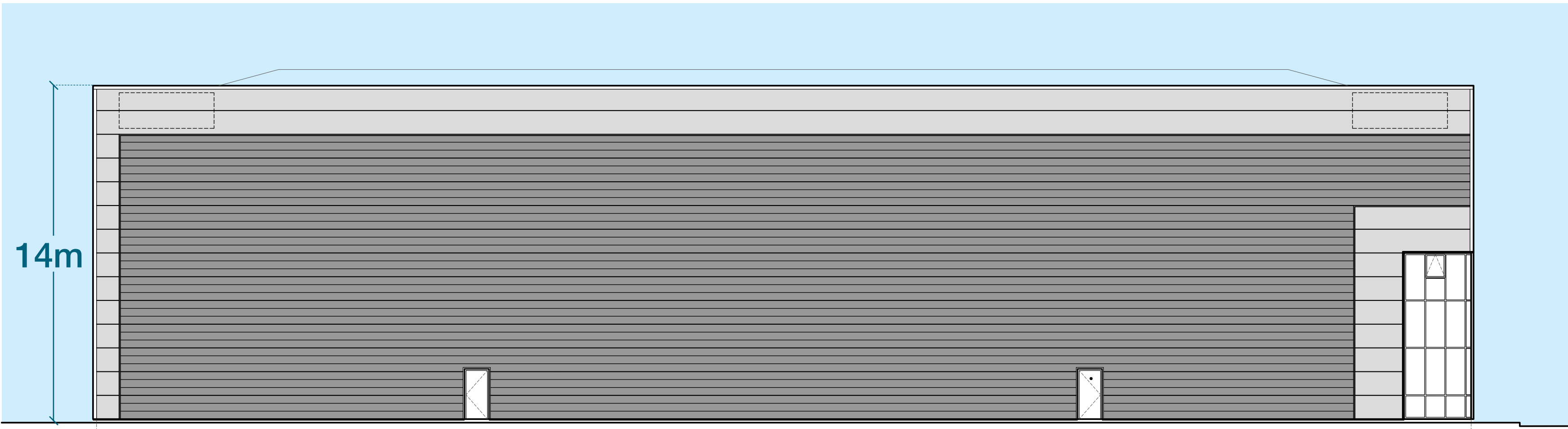
PEREGRINE HOUSE



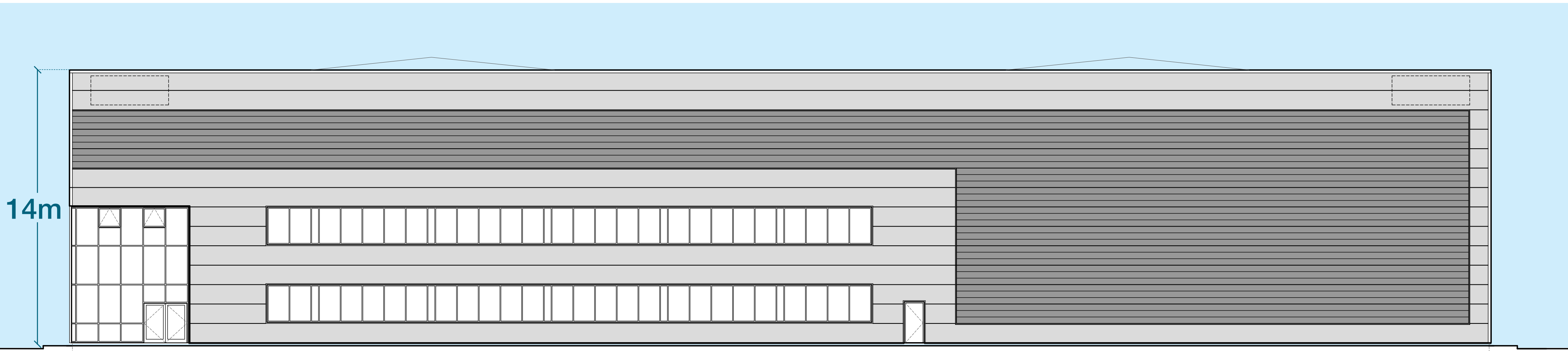
East Elevation



North Elevation



West Elevation

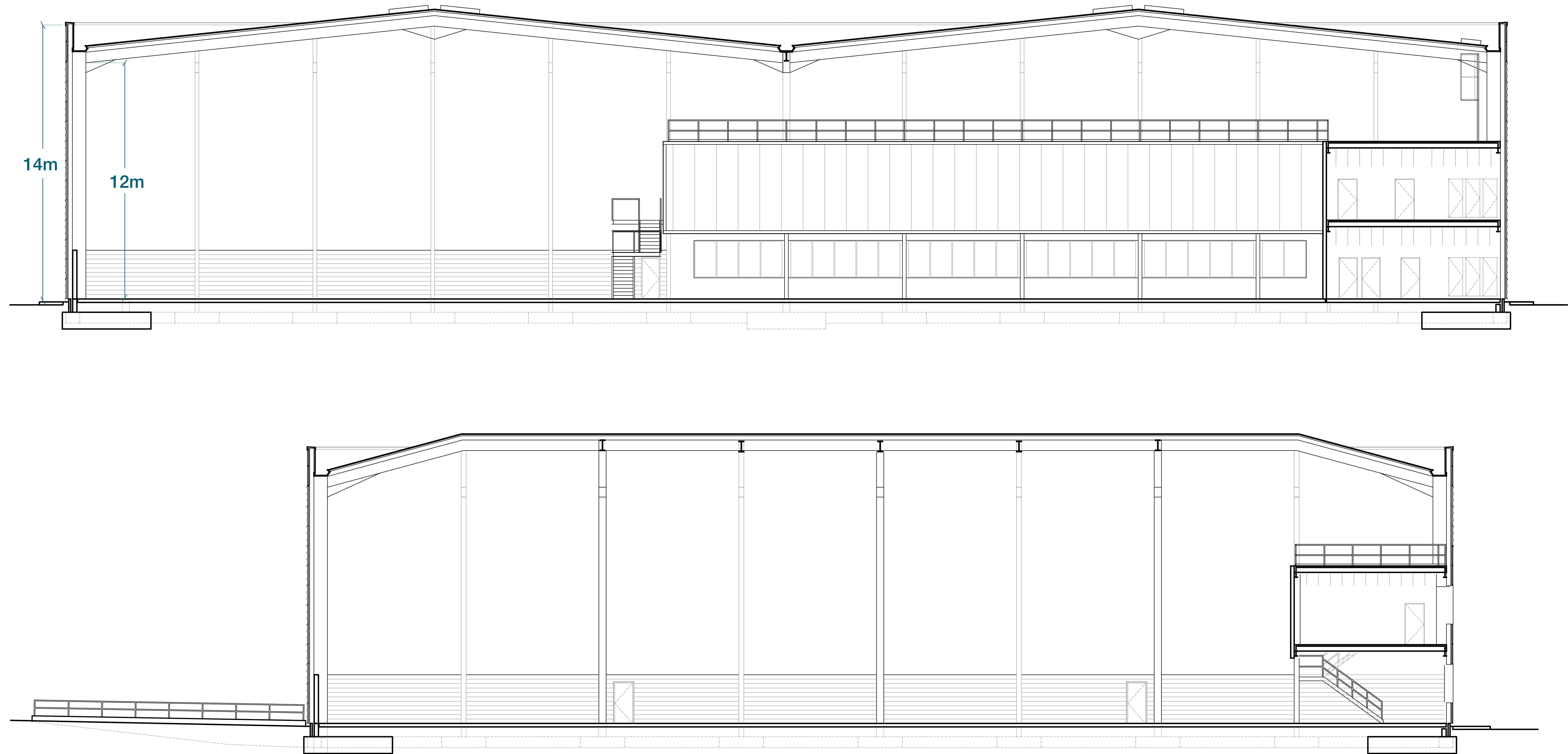


South Elevation

NOT TO SCALE – FOR IDENTIFICATION PURPOSES ONLY



PEREGRINE HOUSE



NOT TO SCALE – FOR IDENTIFICATION PURPOSES ONLY

